

Tuskawilla Office for Lease

Red Bug Lake and Tuskawilla Road

1340 Tuskawilla Road, Suite 102

Winter Springs, FL 32708



Property Features

- End Cap Unit with Monument & Building Signage Available
- 24/7/365 Access Including HVAC Service
- Separate Metered Electric and Water
 - LED Lighting
 - Private Entrance
 - Private Restrooms

Location Features

- Near intersection of Tuskawilla and Red Bug Lake Roads
 - Nearby Shopping and Restaurants
 - Convenient to SR 417
 - Serving Winter Springs, Oviedo and Casselberry submarkets
 - Curb Cut Access off Tuskawilla (Across from McDonalds)
 - Lighted Intersection Access of Red Bug Lake Road

Bob Atkins
Broker
O: 407-875-8040 x 101
M: 407-257-5499
bob@atkinscre.com



COMMERCIAL REAL ESTATE

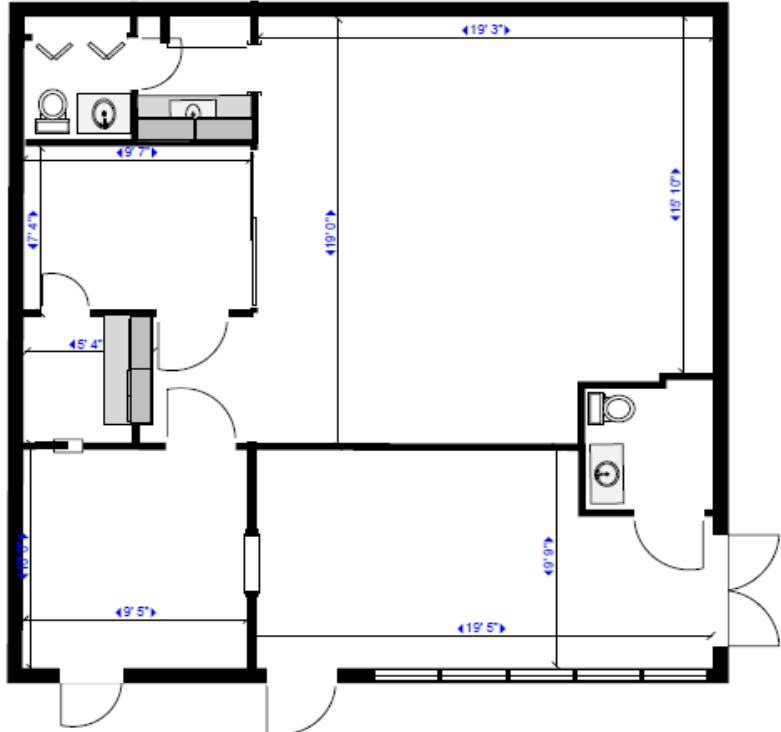


Jackie Atkins
Sales Associate
O: 407-875-8040 x 102
M: 407-383-2719
Jackie@atkinscre.com

Disclaimer: This document has been prepared by Atkins Commercial Real Estate LLC for advertising and general information only. Atkins Commercial Real Estate LLC makes no guarantees, representations or warranties of any kind, expressed or implied, regarding the information including, but not limited to, warranties of content, accuracy and reliability. Any interested party should undertake their own inquiries as to the accuracy of the information. Atkins Commercial Real Estate LLC excludes unequivocally all inferred or implied terms, conditions and warranties arising out of this document and excludes all liability for loss or damages arising therefrom. This publication is the copyrighted property of Atkins Commercial Real Estate LLC and/or its licensor(s). All rights reserved.

Commercial Sales & Leasing | Tenant Representation | Real Estate Consulting | Development Management | Asset Management
www.atkinscre.com 2700 Westhall Lane, Suite 120, Maitland, FL 32751 407-875-8040

1340 Tuskawilla Road, Suite 102 Winter Springs, FL 32708



1340 Tuskawilla Road
Suite 102
Winter Springs, FL 32708

S p a c e F e a t u r e s

SF Area: 900

Asking Rent: \$17 NN

**NN Fees by Tenant: Property Taxes, Ins, Utilities and Janitorial Services
(Owner will pay POA Fees of \$240/Month)**

Lease Term: 3 to 5 Years

Bob Atkins

Broker

O: 407-875-8040 x 101

M: 407-257-5499

bob@atkinscre.com



COMMERCIAL REAL ESTATE



Jackie Atkins

Sales Associate

O: 407-875-8040 x 102

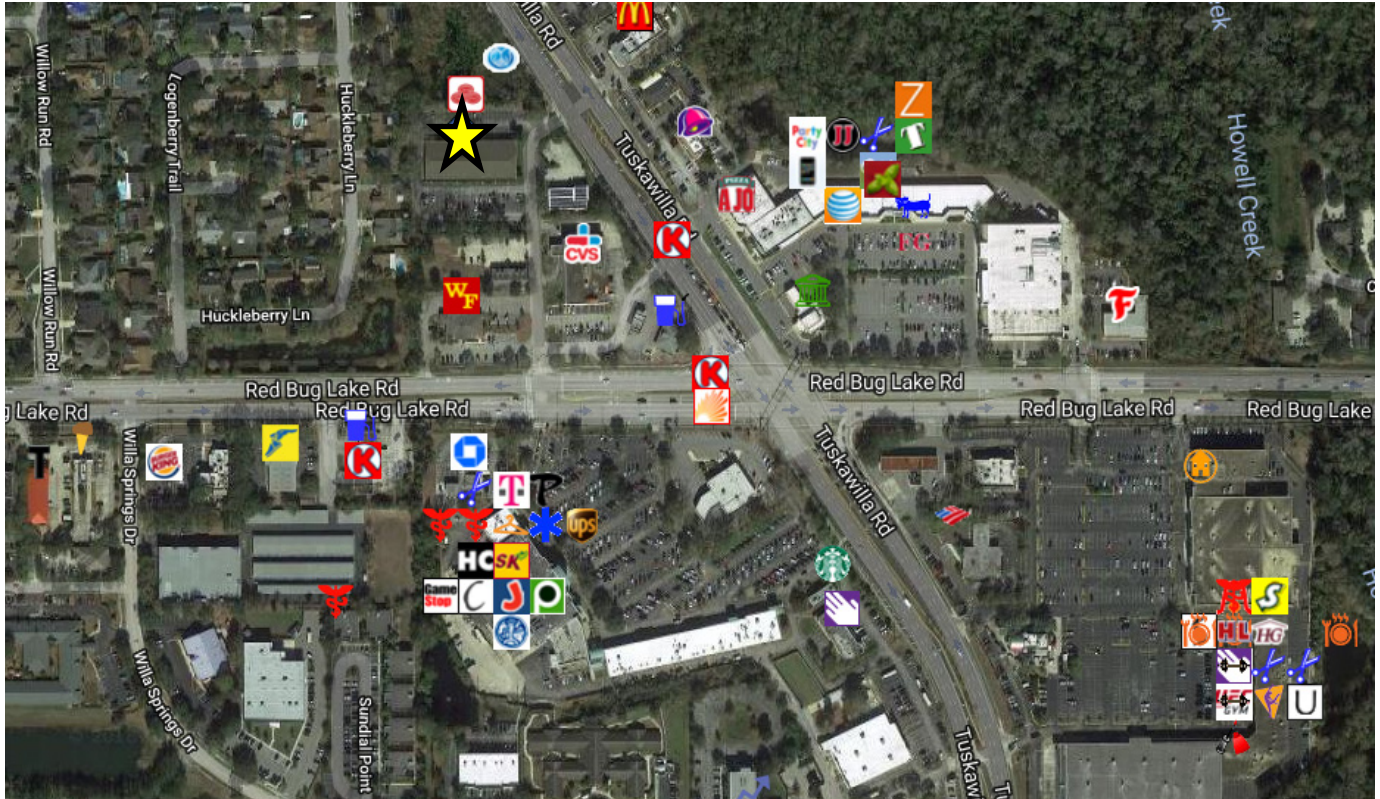
M: 407-383-2719

Jackie@atkinscre.com

Disclaimer: This document has been prepared by Atkins Commercial Real Estate LLC for advertising and general information only. Atkins Commercial Real Estate LLC makes no guarantees, representations or warranties of any kind, expressed or implied, regarding the information including, but not limited to, warranties of content, accuracy and reliability. Any interested party should undertake their own inquires as to the accuracy of the information. Atkins Commercial Real Estate LLC excludes unequivocally all inferred or implied terms, conditions and warranties arising out of this document and excludes all liability for loss or damages arising therefrom. This publication is the copyrighted property of Atkins Commercial Real Estate LLC and/or its licensor(s). All rights reserved.

Commercial Sales & Leasing | Tenant Representation | Real Estate Consulting | Development Management | Asset Management
www.atkinscre.com 2700 Westhall Lane, Suite 120, Maitland, FL 32751 407-875-8040

1340 Tuskawilla Road, Suite 102 Winter Springs, FL 32708



L o c a t i o n F e a t u r e s

- Near intersection of Tuskawilla and Red Bug Lake Roads
 - Nearby Shopping and Restaurants
 - Convenient to SR 417
- Serving Winter Springs, Oviedo and Casselberry submarkets
 - Curb Cut Access off Tuskawilla (Across from McDonalds)
 - Lighted Intersection Access of Red Bug Lake Road

Bob Atkins
Broker
O: 407-875-8040 x 101
M: 407-257-5499
bob@atkinscre.com



COMMERCIAL REAL ESTATE



Jackie Atkins
Sales Associate
O: 407-875-8040 x 102
M: 407-383-2719
Jackie@atkinscre.com

Disclaimer: This document has been prepared by Atkins Commercial Real Estate LLC for advertising and general information only. Atkins Commercial Real Estate LLC makes no guarantees, representations or warranties of any kind, expressed or implied, regarding the information including, but not limited to, warranties of content, accuracy and reliability. Any interested party should undertake their own inquiries as to the accuracy of the information. Atkins Commercial Real Estate LLC excludes unequivocally all inferred or implied terms, conditions and warranties arising out of this document and excludes all liability for loss or damages arising therefrom. This publication is the copyrighted property of Atkins Commercial Real Estate LLC and/or its licensor(s). All rights reserved.

Commercial Sales & Leasing | Tenant Representation | Real Estate Consulting | Development Management | Asset Management
www.atkinscre.com 2700 Westhall Lane, Suite 120, Maitland, FL 32751 407-875-8040