

# I-4 Frontage Offices for Lease

## Clayton Building

### 611 N. Wymore Road

### Winter Park, FL 32789



**Located in the heart of northern Orlando at the I-4 & Lee Road Intersection**

**Close to:  
Winter Park Village  
Park Avenue  
Maitland Center**



**365/7/24 Hour Access  
And HVAC Service  
Security Cameras**

**Parking at 4.5/1000 sf  
(1) Covered Parking  
Space @ \$42.52/Month**

**Suite Left**



**Bob Atkins**  
Broker  
O: 407-875-8040 x 101  
M: 407-257-5499  
[bob@atkinscre.com](mailto:bob@atkinscre.com)



**Jackie Atkins**  
Sales Associate  
O: 407-875-8040 x 102  
M: 407-383-2719  
[Jackie@atkinscre.com](mailto:Jackie@atkinscre.com)

Disclaimer: This document has been prepared by Atkins Commercial Real Estate LLC for advertising and general information only. Atkins Commercial Real Estate LLC makes no guarantees, representations or warranties of any kind, expressed or implied, regarding the information including, but not limited to, warranties of content, accuracy and reliability. Any interested party should undertake their own inquiries as to the accuracy of the information. Atkins Commercial Real Estate LLC excludes unequivocally all inferred or implied terms, conditions and warranties arising out of this document and excludes all liability for loss or damages arising therefrom. This publication is the copyrighted property of Atkins Commercial Real Estate LLC and/or its licensor(s). All rights reserved.

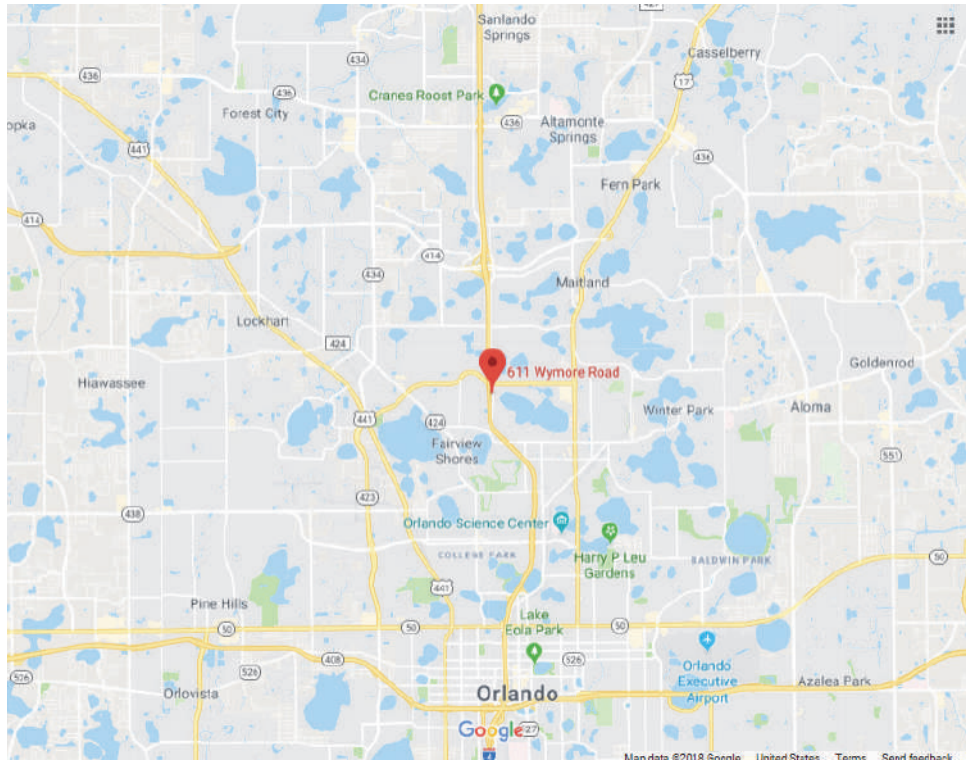
**Commercial Sales & Leasing | Tenant Representation | Real Estate Consulting | Development Management | Asset Management**  
[www.atkinscre.com](http://www.atkinscre.com) 2700 Westhall Lane, Suite 120, Maitland, FL 32751 407-875-8040

# I-4 Frontage Offices for Lease

## Clayton Building

### 611 N. Wymore Road

### Winter Park, FL 32789



**Bob Atkins**  
*Broker*  
O: 407-875-8040 x 101  
M: 407-257-5499  
[bob@atkinscre.com](mailto:bob@atkinscre.com)



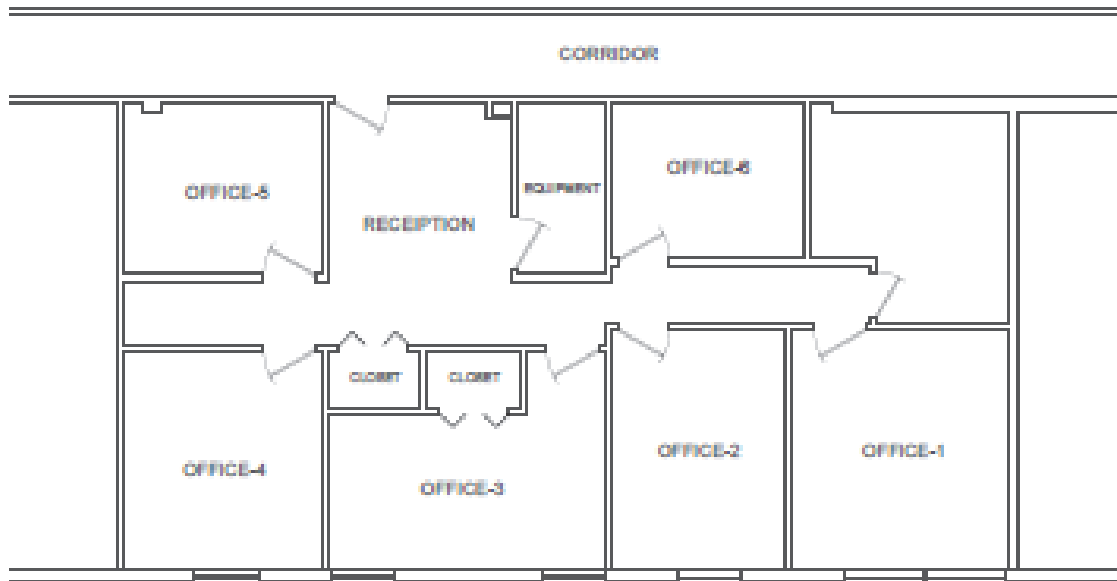
**Jackie Atkins**  
*Sales Associate*  
O: 407-875-8040 x 102  
M: 407-383-2719  
[Jackie@atkinscre.com](mailto:Jackie@atkinscre.com)

Disclaimer: This document has been prepared by Atkins Commercial Real Estate LLC for advertising and general information only. Atkins Commercial Real Estate LLC makes no guarantees, representations or warranties of any kind, expressed or implied, regarding the information including, but not limited to, warranties of content, accuracy and reliability. Any interested party should undertake their own inquiries as to the accuracy of the information. Atkins Commercial Real Estate LLC excludes unequivocally all inferred or implied terms, conditions and warranties arising out of this document and excludes all liability for loss or damages arising therefrom. This publication is the copyrighted property of Atkins Commercial Real Estate LLC and/or its licensor(s). All rights reserved.

Commercial Sales & Leasing | Tenant Representation | Real Estate Consulting | Development Management | Asset Management  
[www.atkinscre.com](http://www.atkinscre.com) 2700 Westhall Lane, Suite 120, Maitland, FL 32751 407-875-8040



**Clayton Building  
611 N. Wymore Road  
Winter Park, FL 32789  
Suite 222—990—Upto 1,448 SF**



PROPOSED FLOOR PLAN  
OFFICE TOTAL FLOOR AREA: 1,448 SF

Suite	SF Area	Base Rate	Annual Rent	Monthly Rent	6.2% Sales Tax Eff 1/19	Total Rent
222	1448	\$ 18.00	\$ 26,064.00	\$ 2,172.00	\$ 134.66	\$ 2,306.66

**Bob Atkins**  
Broker  
O: 407-875-8040 x 101  
M: 407-257-5499  
[bob@atkinscre.com](mailto:bob@atkinscre.com)



**Jackie Atkins**  
Sales Associate  
O: 407-875-8040 x 102  
M: 407-383-2719  
[Jackie@atkinscre.com](mailto:Jackie@atkinscre.com)

Disclaimer: This document has been prepared by Atkins Commercial Real Estate LLC for advertising and general information only. Atkins Commercial Real Estate LLC makes no guarantees, representations or warranties of any kind, expressed or implied, regarding the information including, but not limited to, warranties of content, accuracy and reliability. Any interested party should undertake their own inquiries as to the accuracy of the information. Atkins Commercial Real Estate LLC excludes unequivocally all inferred or implied terms, conditions and warranties arising out of this document and excludes all liability for loss or damages arising therefrom. This publication is the copyrighted property of Atkins Commercial Real Estate LLC and/or its licensor(s). All rights reserved.

Commercial Sales & Leasing | Tenant Representation | Real Estate Consulting | Development Management | Asset Management  
[www.atkinscre.com](http://www.atkinscre.com) 2700 Westhall Lane, Suite 120, Maitland, FL 32751 407-875-8040